

Installation guide on 中文字詞認讀訓練(第二版)字得其樂 School Version

Prior to installation

1. This installation guide **must be used by QUALIFIED IT personnel** capable of server installation and maintenance.
2. You must have the 2nd Edition of the **School Version** CD-ROM 「字得其樂」 published in 2008. (No exe files in the CD-ROM)
3. Make sure you have all the 3 CDs in the package.

Technical Requirements

1. Microsoft Windows OS is required.
2. If there is any web server system, PHP or database system already installed on the server. Please follow only the concept on importing data from CD-ROM. Make
3. sure HTTP and MySQL Ports are not being occupied.
4. Administrative right on the installation server is required.
5. IT personnel should be responsible for server maintenance, including but not limited to backup, physical and system security.
6. It is recommended to change all the necessary passwords after installation.
7. Make sure you have followed and completed all the procedures in this guide. Review your steps if there is problem. If problem persists, un-install EasyPHP and remove all the copied files and start from beginning again.

Procedures Outlines

1. Install Easy PHP v2.0b1
2. Create new database at phpMyAdmin
3. Create MySQL database authentication
4. Import data from CD-ROM
5. Managing the 「字得其樂」 system
6. Configure the server for other computers to access
7. Student login the 「字得其樂」 system

Repeat step 4 for the other 2 CD-ROMs

1. Install Easy PHP

1.1 Download and execute the package EasyPHP package from:

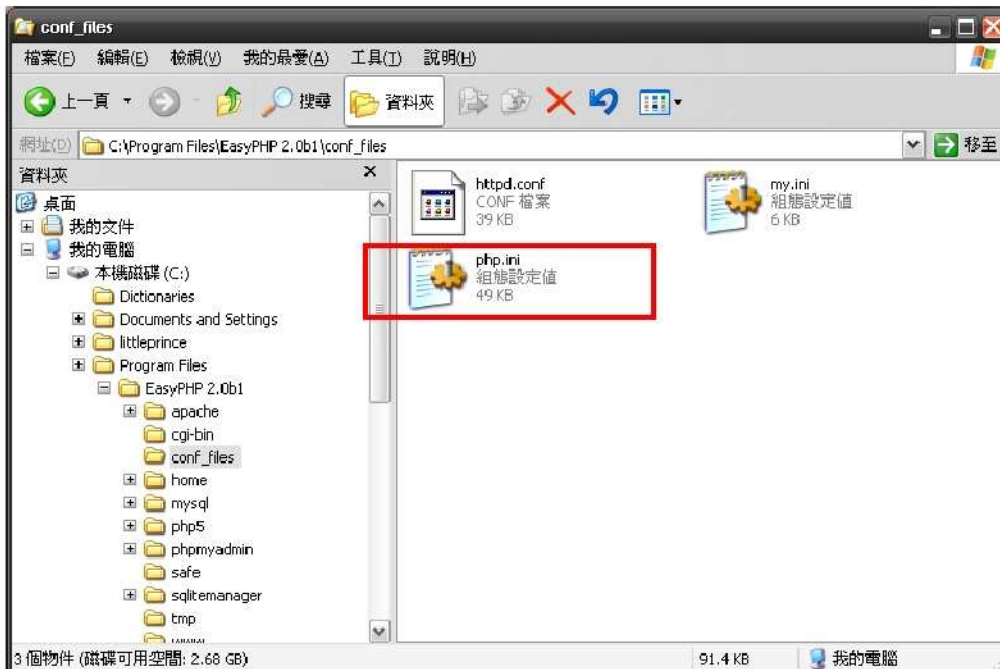
<http://sourceforge.net/projects/quickeasyphp/files/Archives/2.0b1/>

* 「字得其樂」 do not support for higher version of EasyPHP, please use 2.0b1 only.

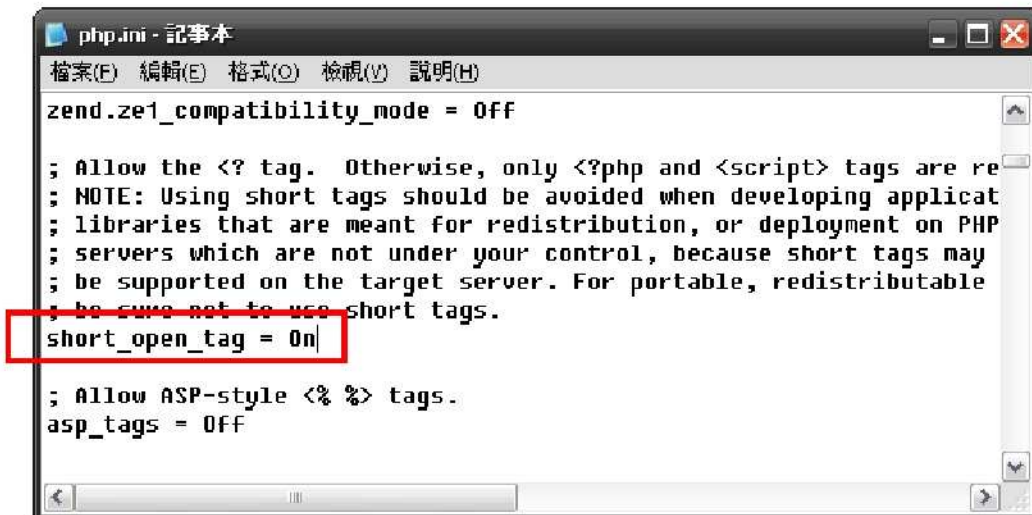
Follow the steps to finish installation.



1.2 After installation, open C:\Program Files\EasyPHP 2.0b1\conf_files\ php.ini with notepad.



- 1.3 Find the text `short_open_tag` and change the line to `short_open_tag = On`



```
zend.ze1_compatibility_mode = Off

; Allow the <? tag. Otherwise, only <?php and <script> tags are re
; NOTE: Using short tags should be avoided when developing applicat
; libraries that are meant for redistribution, or deployment on PHP
; servers which are not under your control, because short tags may
; be supported on the target server. For portable, redistributable
; be sure not to use short tags.
short_open_tag = On

; Allow ASP-style <% %> tags.
asp_tags = Off
```

- 1.4 Reboot your computer and start the EasyPHP from start menu. If you want to start it automatically, you may put a short cut in the startup folder. You should see green light in both Apache and MySQL.

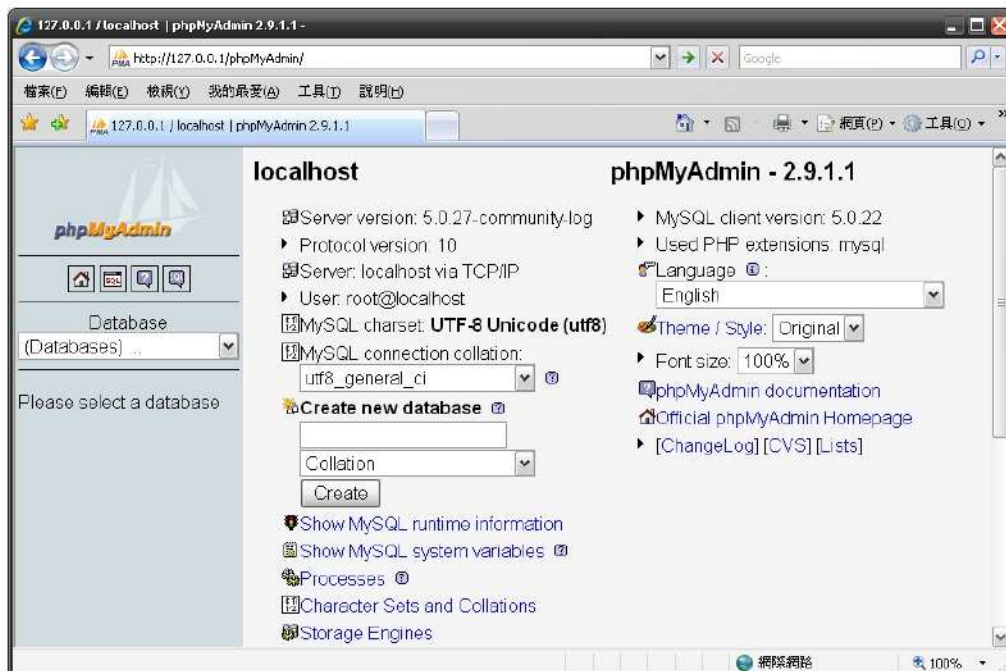


2. Create new database at phpMyAdmin

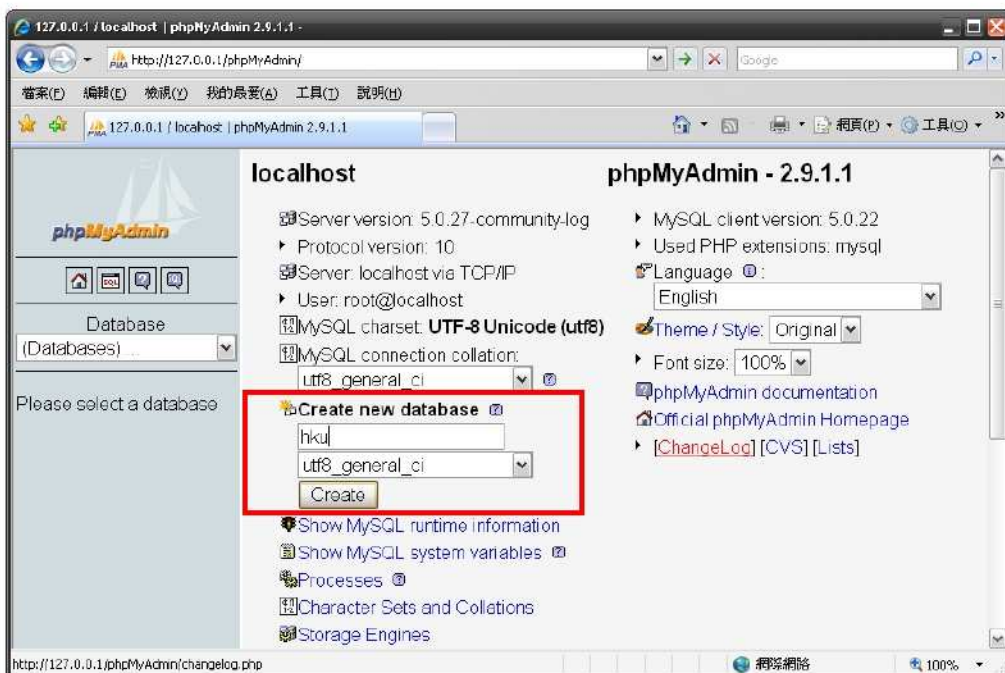
- 2.1 Copy the folder C:\Program Files\EasyPHP 2.0b1\phpMyAdmin to C:\Program Files\EasyPHP 2.0b1\www



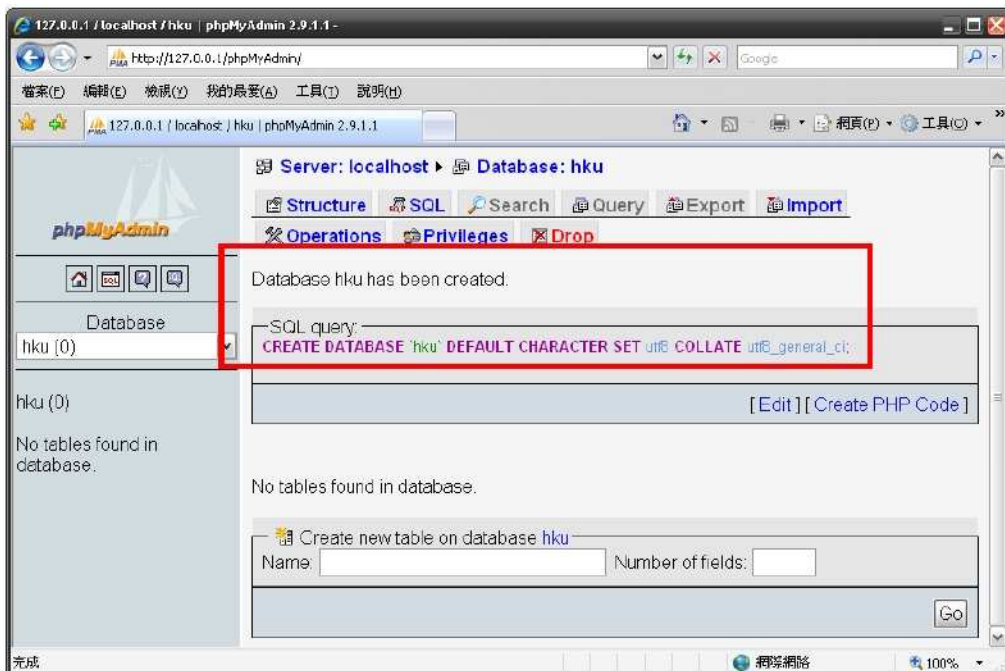
- 2.2 Start your Browser and visit the follow URL:
<http://127.0.0.1/phpMyAdmin>
The following page should appears.



- 2.3 In the text box below "Create new database", type **hku** and choose "utf8_general_ci" from the pull down box and click "Create".



- 2.4 The following message appears if the database is created successfully.

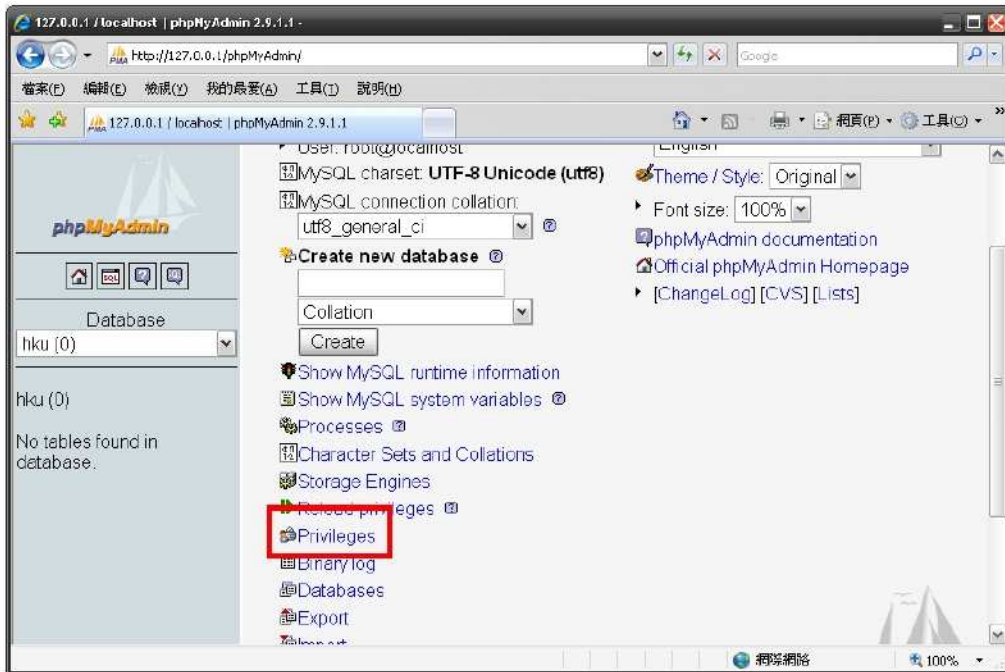


2.5 Click the home button to return to phpMyAdmin homepage.

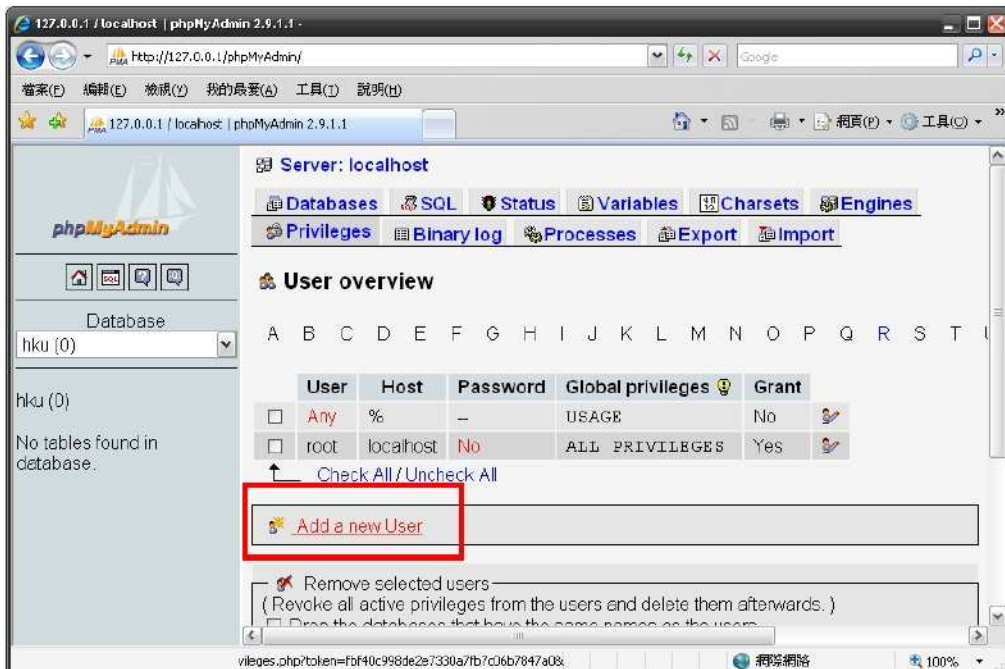


3. Create MySQL database authentication

3.1 At phpMyAdmin homepage, click "Privileges".



3.2 When this screens appears, click "Add a new user".



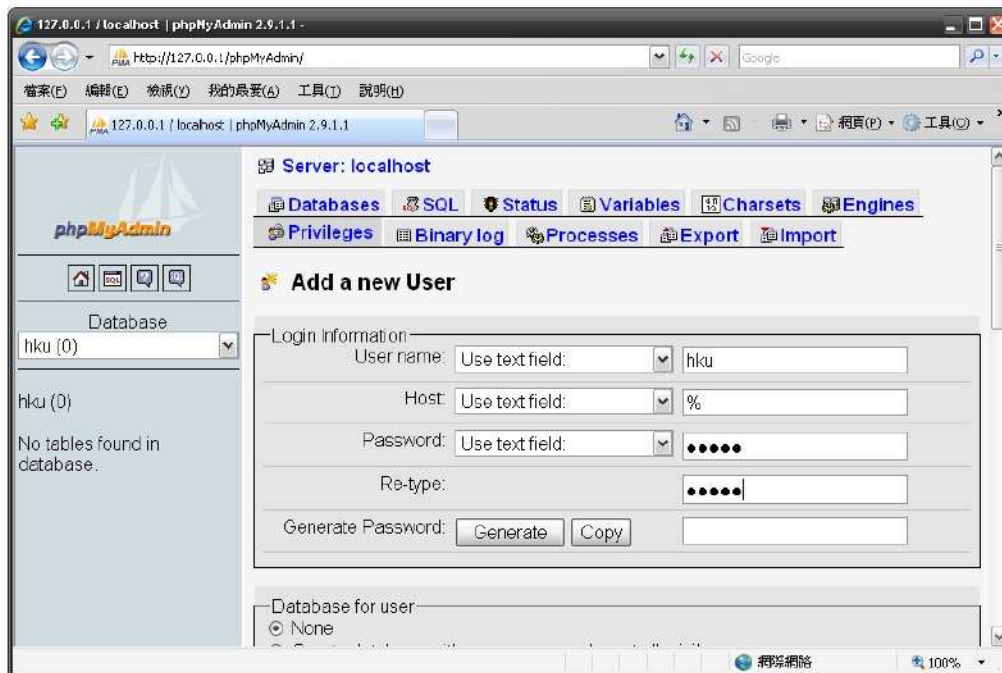
3.3 Enter the following information:

User name: **hku**

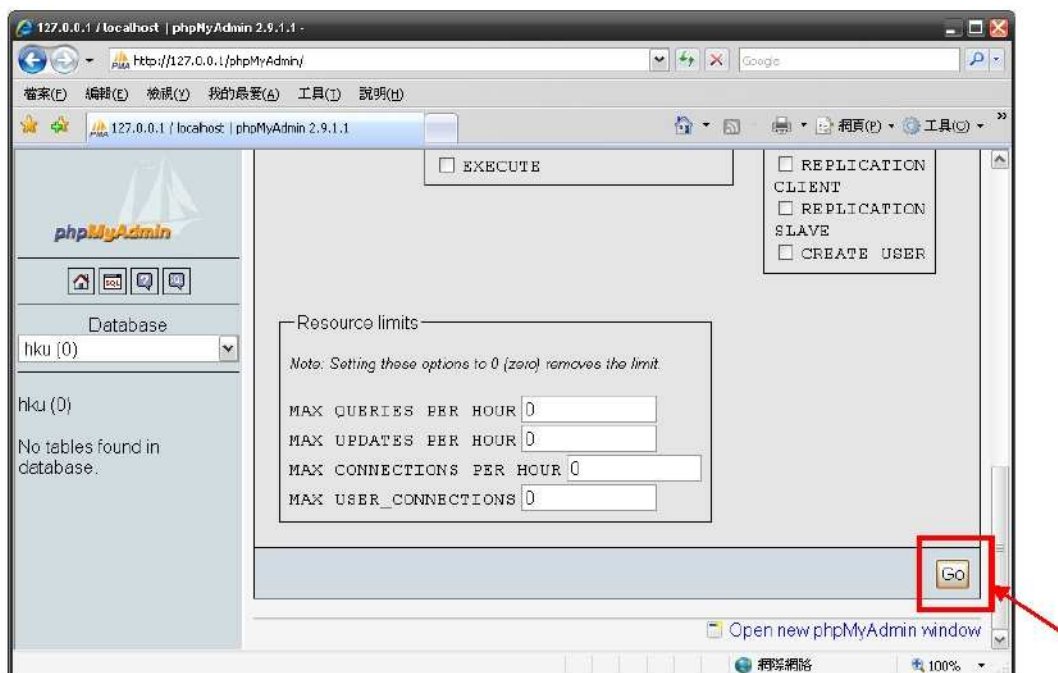
Host: **%**

Password: **hkudb**

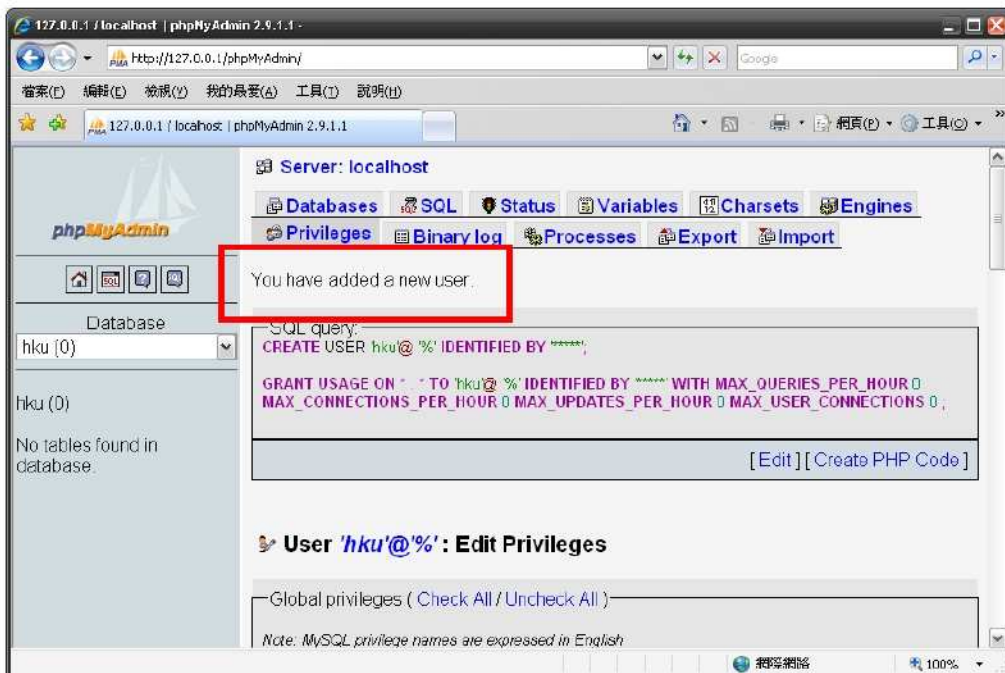
Retype: **hkudb**



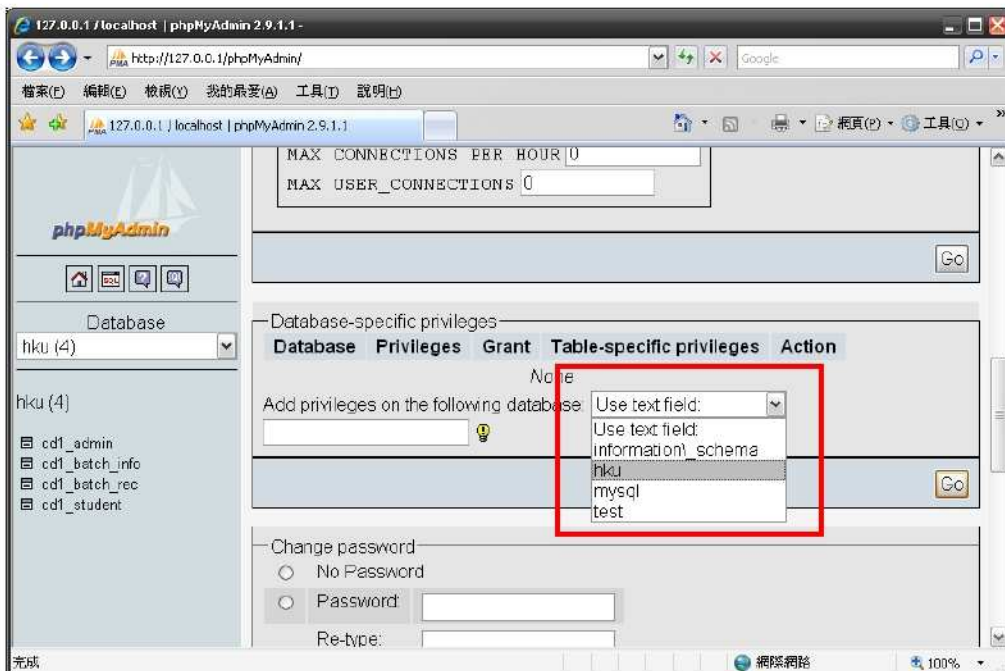
3.4 Scroll down to the bottom and click "GO".



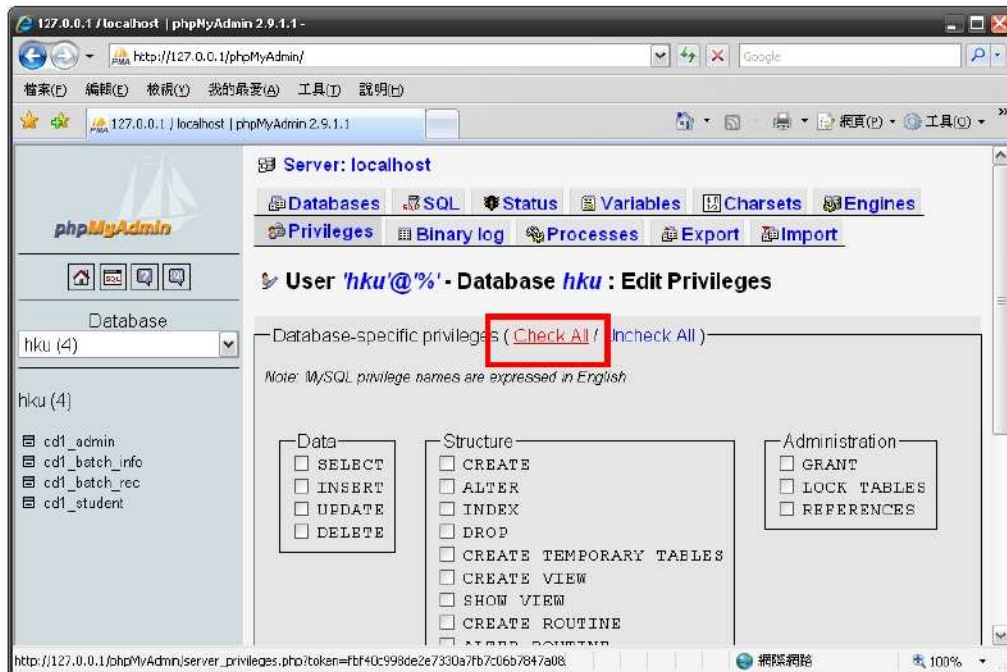
3.5 You should see the following message after created an user.



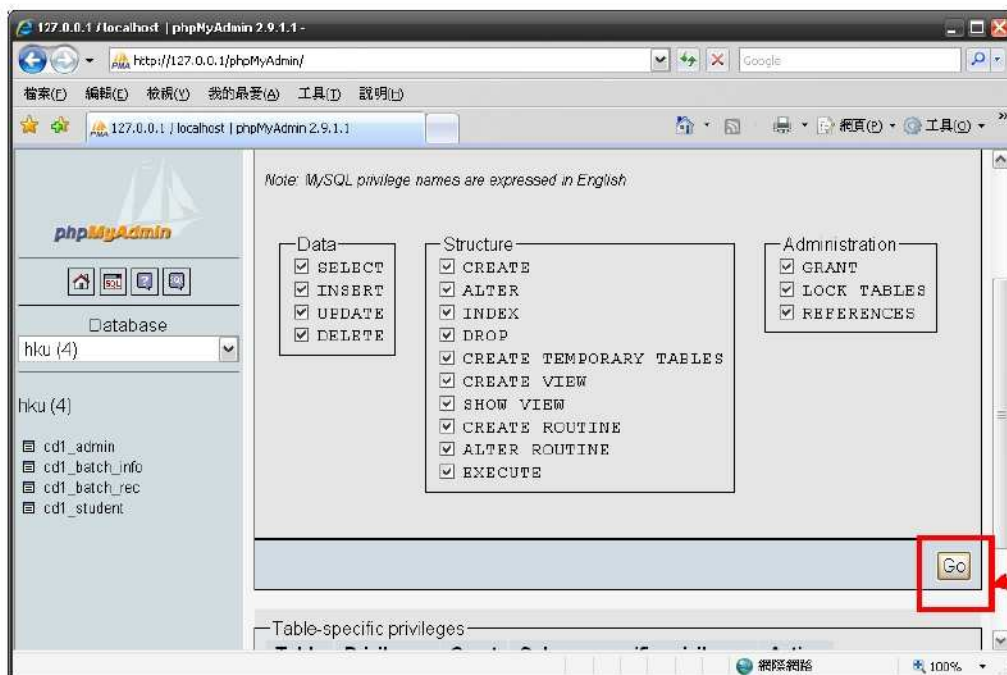
3.6 Scroll down to Database-specific privileges. Select "hku" from the pull down box.



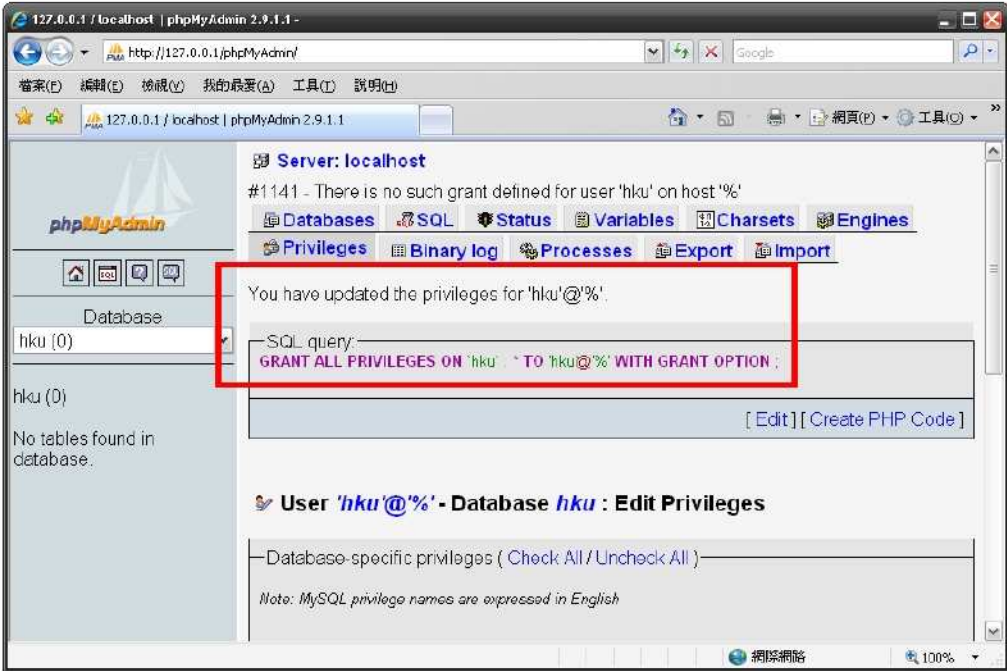
3.7 When the following screen appears, click "Check All".



3.8 Click "GO" button under this section.



3.9 The following message should appear.



4. Import data from CD-ROM

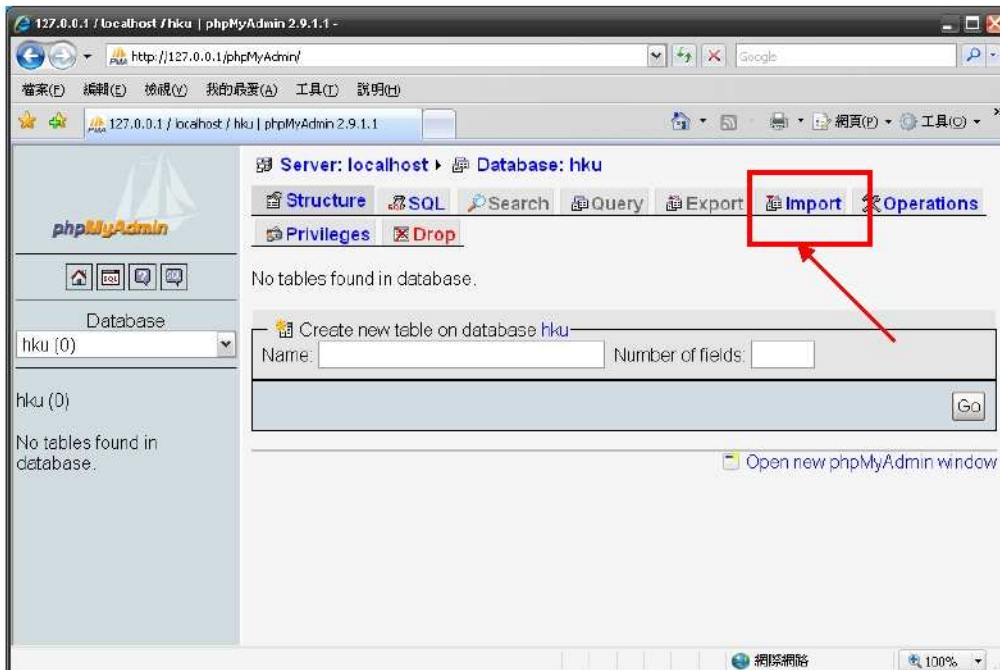
- 4.1 Copy all the folders from CD-ROM 「字得其樂 1」 to C:\Program Files\EasyPHP 2.0b1\www



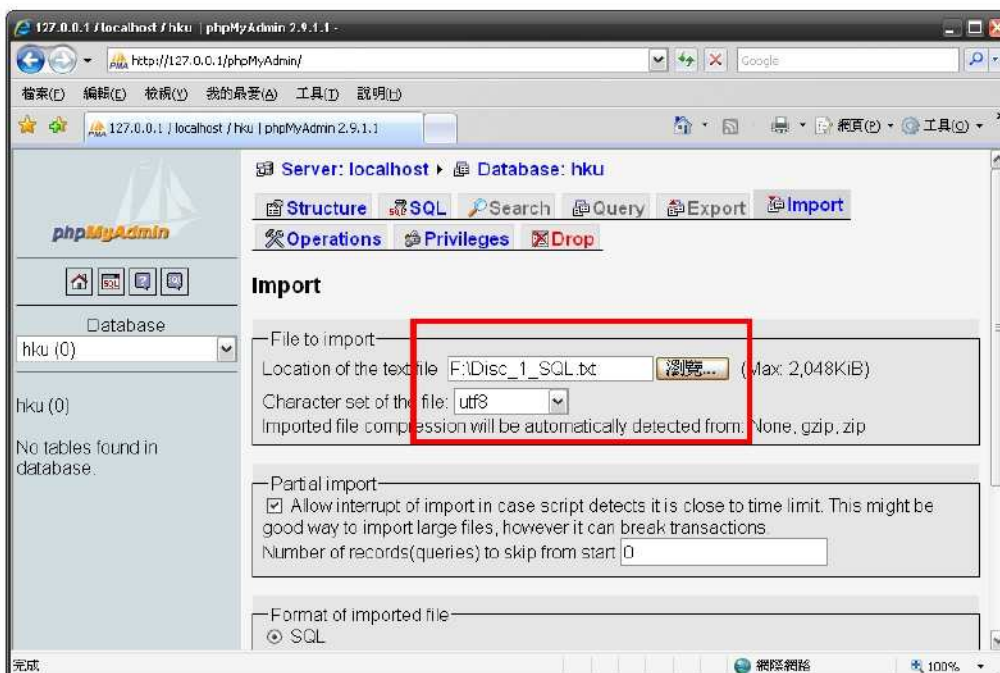
- 4.2 Go back to your browser with phpMyAdmin. Click the "hku" database from the left menu.



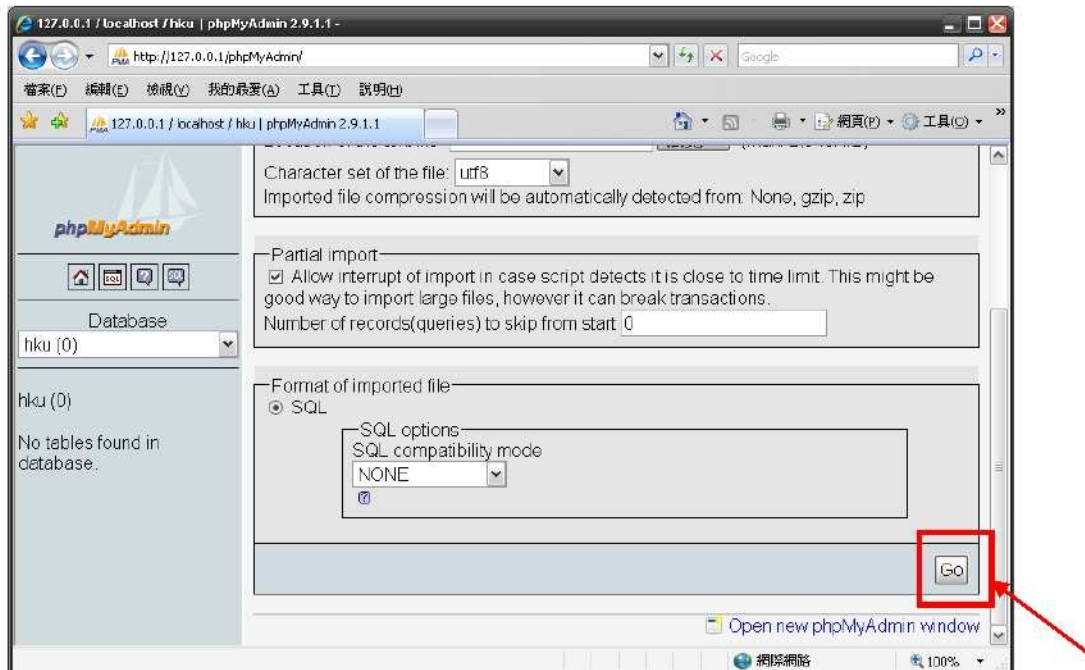
4.3 When the following screen appears, click "Import" at the top menu.



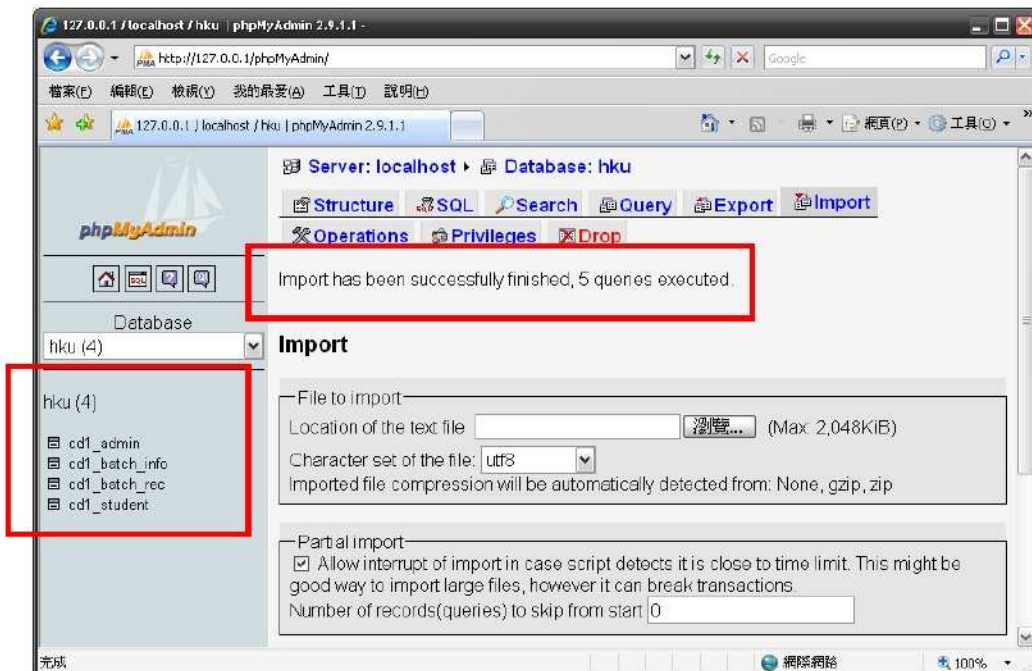
4.4 Select the Disc_1_SQL.txt from your CD.



4.5 Click the "Go" button at the bottom of the page.

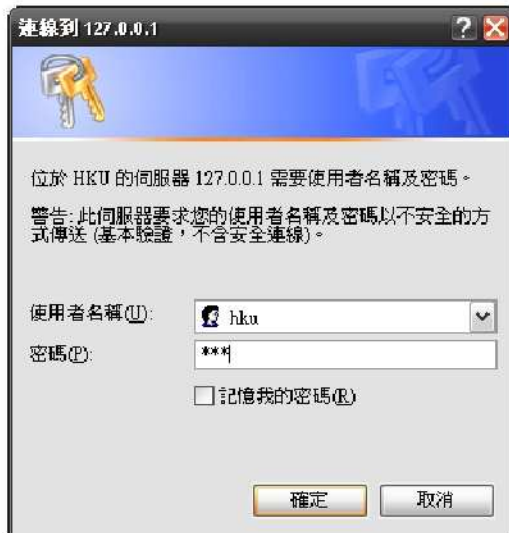


4.6 The following message should appear and 4 tables are created if imported successfully.



5. Managing the 「字得其樂」 system

5.1 Use your browser to load <http://127.0.0.1/CD1Admin>. A dialog box appears asking for username and password. The username and password are both **hku**.



5.2 You can create user for your student, view student result and change the system password at this administrator page.



5.3 To create a user, click "Create User" and enter correct information.
Click submit to save to information.



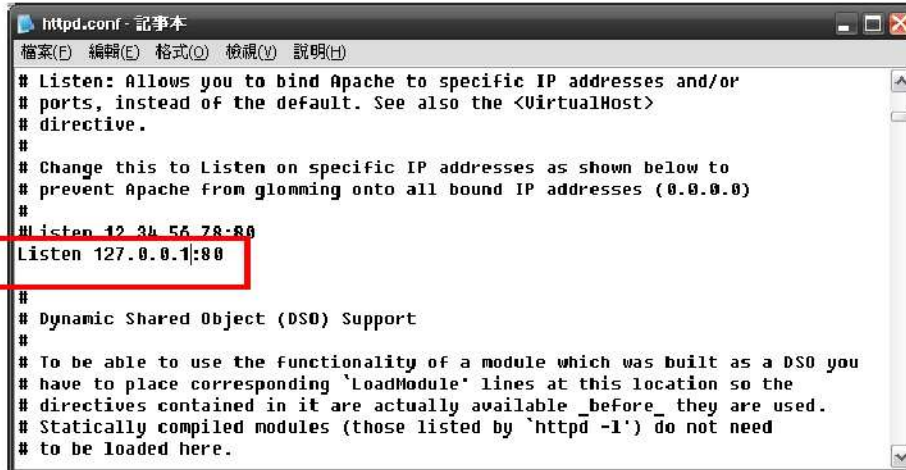
5.4 You can see the user account information if it is created successfully.



6. Configure Apache Server for other computers to access

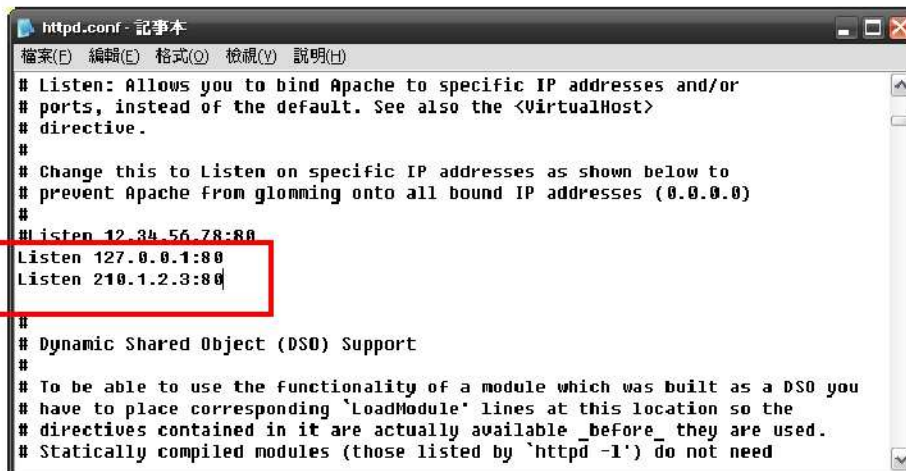
6.1 You must obtain your server IP that other computers can access.

6.2 Open C:\Program Files\EasyPHP 2.0b1\apache\conf\httpd.conf with notepad.
Find the line Listen 127.0.0.1:80



```
httpd.conf - 記事本
檔案(F) 編輯(E) 格式(O) 檢視(V) 說明(H)
# Listen: Allows you to bind Apache to specific IP addresses and/or
# ports, instead of the default. See also the <VirtualHost>
# directive.
#
# Change this to Listen on specific IP addresses as shown below to
# prevent Apache from glomming onto all bound IP addresses (0.0.0.0)
#
#listen 12.34.56.78:80
Listen 127.0.0.1:80
#
# Dynamic Shared Object (DSO) Support
#
# To be able to use the functionality of a module which was built as a DSO you
# have to place corresponding 'LoadModule' lines at this location so the
# directives contained in it are actually available _before_ they are used.
# Statically compiled modules (those listed by 'httpd -l') do not need
# to be loaded here.
```

6.3 Copy and paste this line under the original line. Change the IP to your server IP and save the file.



```
httpd.conf - 記事本
檔案(F) 編輯(E) 格式(O) 檢視(V) 說明(H)
# Listen: Allows you to bind Apache to specific IP addresses and/or
# ports, instead of the default. See also the <VirtualHost>
# directive.
#
# Change this to Listen on specific IP addresses as shown below to
# prevent Apache from glomming onto all bound IP addresses (0.0.0.0)
#
#listen 12.34.56.78:80
Listen 127.0.0.1:80
Listen 210.1.2.3:80
#
# Dynamic Shared Object (DSO) Support
#
# To be able to use the functionality of a module which was built as a DSO you
# have to place corresponding 'LoadModule' lines at this location so the
# directives contained in it are actually available _before_ they are used.
# Statically compiled modules (those listed by 'httpd -l') do not need
```

*The above IP 210.1.2.3 is for demonstration only. You must replace it with your server's IP.

6.4 Reboot your computer and start EasyPHP again.



7. Student login the 「字得其樂」 system

7.1 Students can start the browser and load the path

<http://server IP/CD1> to load 「字得其樂」.

When loading the application, the browser may prompt for installing Shockwave player which is required to play the games. Please follow the instruction to install the player.



7.2 After successful login the game screen should appear.

