



General Information on Application and Renewal Procedure for HKT-P(III) & HKT-JS(II)

The Hong Kong Specific Learning Difficulties Research Team (the Research Team) has developed the following test batteries:

- (1) The Hong Kong Test of Specific Learning Difficulties in Reading and Writing for Primary School Students — Third Edition [HKT-P (III)] (2015)*. This latest edition, with Literacy Tests for Junior Primary Students revised in 2021, supersedes The Hong Kong Test of Specific Learning Difficulties in Reading and Writing for Primary School Students—Second Edition [HKT-P(II)] (2007) and The Hong Kong Test of Specific Learning Difficulties in Reading and Writing (HKT-SpLD, 2000); and
- (2) The Hong Kong Test of Specific Learning Difficulties in Reading and Writing for Junior Secondary School Students—Second Edition [HKT-JS(II)] (2012). This latest edition supersedes The Hong Kong Test of Specific Learning Difficulties in Reading and Writing for Junior Secondary School Students (HKT-JS) (2007).

These Chinese test batteries, designed for individual administration, are instruments for the assessment of specific learning difficulties in reading and writing for primary and junior secondary school students respectively.

User Registration

With the support of the Hong Kong Jockey Club Charities Trust, these test batteries are supplied on loan basis to organisations with registered users free of charge. The use of the HKT-P(III) and HKT-JS(II) is restricted to educational and clinical psychologists, and academic researchers who registered as test users. Only registered users are eligible to use The Hong Kong Test of Specific Learning Difficulties in Reading and Writing (HKT). To be a registered user, s/he has to be a professional educational or clinical psychologist, eligible for the membership of the Division of Educational Psychology (DEP) or the Division of Clinical Psychology (DCP) of the Hong Kong Psychological Society (HKPS), the Hong Kong Association of Educational Psychologists (HKAEP) or the Hong Kong Institute of Clinical Psychologists (HKICP). The psychologist should complete and submit the *User Registration Form*. Should there be changes in the personal data of the registered user, the user concerned is required to complete and submit the *Change of Personal Data Form for Registered HKT User*.

Application

Due to the limited number of test batteries available, the Research Team adopts the policy of supplying test batteries on loan to the **organisations** providing services for children, rather than to individual users. These organisations should have registered users responsible for the appropriate application and safekeeping of the test batteries.

To apply for the test batteries, a Coordinator (who should be a professional educational or clinical psychologist) of an organisation should

1. Download and complete the ***Organisation Application Form*** and
2. Email the completed form together with the ***User Registration Form*** to the Hong Kong Specific Learning Difficulties Research Team (Email: hksld@eduhk.hk). (see Appendix 1)

It should be noted that the organisation has the responsibility to inform the Research Team of any changes regarding the Coordinator or the serving test users by updating the ***Organisation Application Form***. Should there be no more registered users serving the organisation, the organisation is responsible for the safe return of the test batteries to the Research Team.

The organisation must ensure that the test batteries will not be made available for use by unregistered users or other organisations. If any of the test user(s) of the organisation will use HKT in other organisation(s), the test user(s) should also complete the ***Individual Use Form*** (Appendix I of the Organisation Application Form). ***Unethical or inappropriate use of the test batteries by organisations may result in removal from the list of registered users and immediate recall of the test batteries by the Research Team.***

Long- or short-term loan of Test Batteries

Test batteries are available to organisations on long- or short-term loan basis (see Appendix 2). Short-term loan is in principle renewable. If there is a queue for short-term loan, a waiting time might be incurred. To renew the test batteries, a Coordinator (who should be a professional educational or clinical psychologist) of an organisation should submit an updated '***Organisation Application Form***' to the Research Team between 1 and 30 April annually.

It should be noted that organisations on short-term loan should renew the loan annually on time and, where appropriate, return the test batteries in good condition and on time. Penalty would be imposed for loan overdue, including removal of the users of the organisation from the list of HKT registered users and suspension of the loan of HKT to the organisation involved. Organisations on long-term loan should send us the updated form as appropriate (e.g. when there is a change in users or contact information of users).

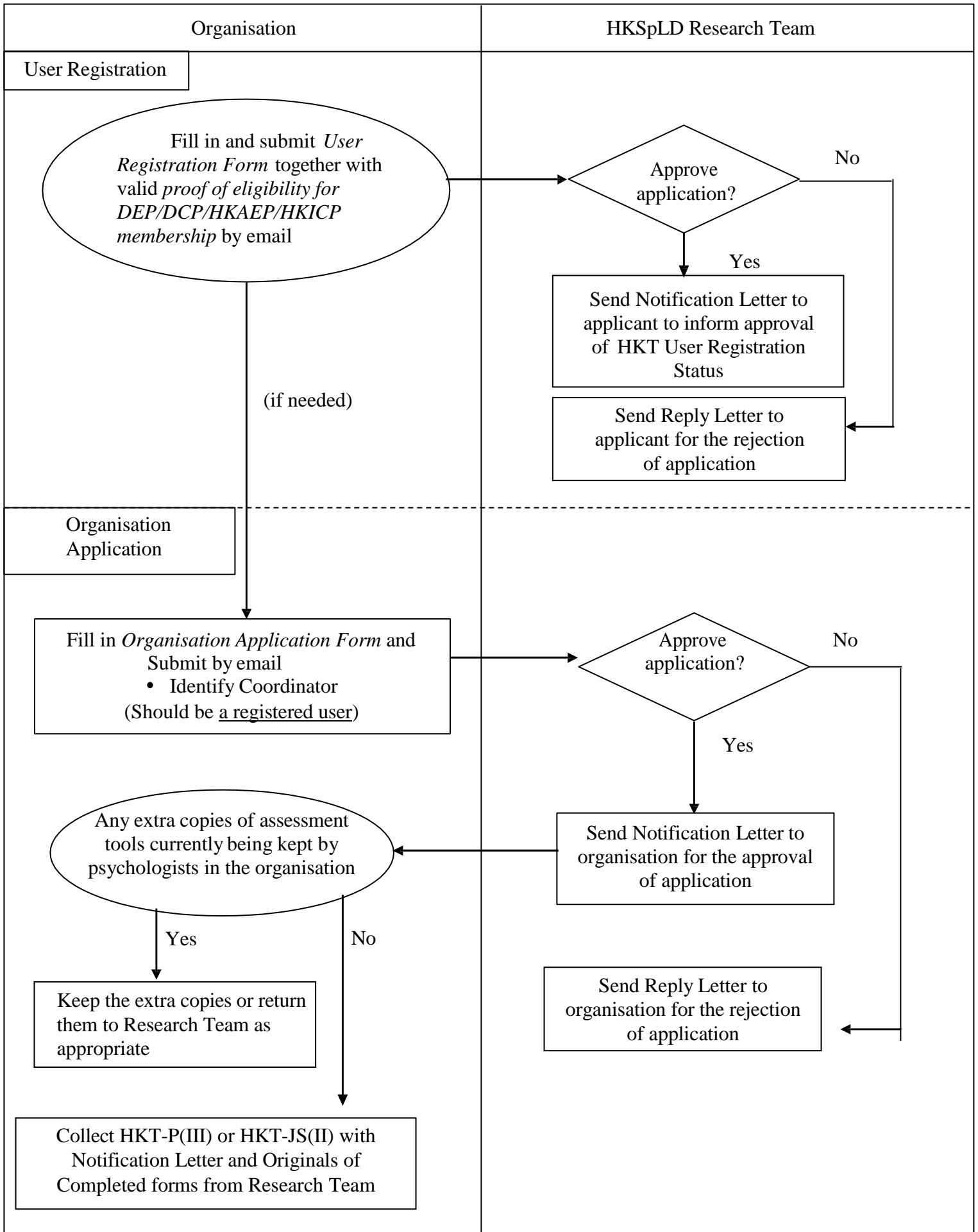
Reporting on Loss or Theft

In case of loss or theft of whole set or core items of the test battery such as the test booklet(s), manual, and CD(s), the user has the responsibility to report to the Research Team and police as soon as possible and to inform the Research Team.

Please download the forms from at the website of the Research Team. For enquiries, please email the Research Team at hksld@eduhk.hk.

Hong Kong Specific Learning Difficulties Research Team

Revised in June 2022



Note on Long Term and Short Term Loan

The Research Team strives to ensure that the limited number of test batteries be distributed to organisations in an accountable manner. The basic principle of eligibility for long- or short-term loan is given below for reference (the examples are not to be considered exhaustive):

Eligible for application of Long-term loan:

Basic principle: The organisation offers direct psychological services to children and youth on a regular basis, i.e. it needs the tests on a day-to-day basis in their work.

Examples:

- Public-funded school-based Educational Psychological Services for mainstream and special schools;
- Government departments providing direct psychological services to children and youth
- Direct Subsidy Schools or private schools which operate school-based psychological services for their students;
- Universities running professional training programmes to educational and clinical psychologists;
- Non-governmental Organisations (NGOs) providing a regular and direct psychological service to children and youth.

Eligible for application of Short-term loan:

Basic principle: The organisation does not offer direct psychological services to children and youth on a regular basis, or that the organisation is of a private practice nature.

Examples:

- Psychological services in private practice;
- NGOs which operate time-limited projects in which psychological services to children are included;
- Research projects.

Due to the limited number of test batteries available, the above principle is applied subject to the availability of the test sets. **The Research Team reserves the right to make the final decision with regard to the distribution of the test batteries.**